

# **ALUMINUM HEATSINK PROFILES CATALOG**

# ABOUT SEHNGHAI

Foshan Shenghai Aluminum Co., Ltd. was established in 2010 and has grown into a leading aluminum profile manufacturer in China, providing precision engineered extrusion solutions.

## I Manufacturing Capability

- ▶ **15 years** of experience in aluminum extrusion
- ▶ Extrusion workshop: **7 extrusion production lines**
- ▶ Factory area: **23,000m<sup>2</sup>**
- ▶ Surface treatment: **anodizing and powder coating**
- ▶ Annual output: **8000+ tons**
- ▶ Supply domestic market and export to 20 countries

**We provide OEM service, customized colors and styles**



### Custom Design

for unique shape and weight requirements



### Cost-effectiveness

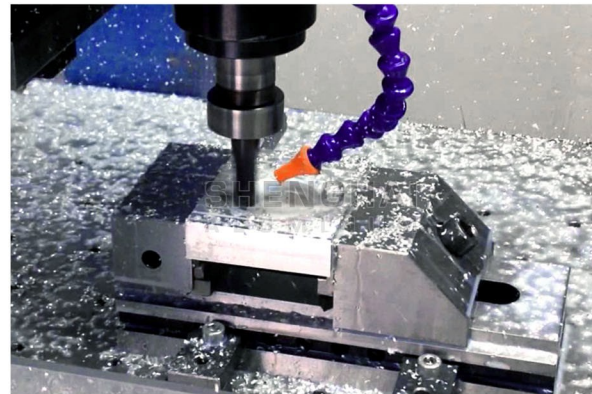
option for high volume applications



### Design Flexibility

produce complex shapes with a high degree of accuracy and repeatability





# CNC Machines

Services: Precision cutting, punching, drilling, tapping, turning, milling

Tolerance:  $\pm 0.01-0.02$  mm







>>> Extrusion Line



>>> Anodized Line





# The Professional Custom Heat Sink Manufacturer And Supplier

---

Extruded aluminum is one of the most popular and cost-effective manufacturing methods.

The size of extruded heat sinks varies depending on the application, with small sizes for board-level applications and large sizes for medium-power applications.

## Support Custom



- ▶ Various sizes
- ▶ Various shapes
- ▶ Various surface

## Smooth Cut



- ▶ Polished edging
- ▶ Excellent processing
- ▶ Surface is smooth and flat

## Selection Material



- ▶ Light
- ▶ Long life
- ▶ Corrosion-resistant
- ▶ Strong and durable

## Excellent Workmanship



- ▶ Durable
- ▶ One piece
- ▶ Not easily deformed
- ▶ High resistance to stress

# CONTENTS

1

**LED Aluminum Heatsink**

---

2

**Electronic Aluminum Heatsink**

---

3

**Aluminum Heatsink Heavy Duty**

---

4

**Custom Aluminum Heatsink**

---

5

**Anodized Heatsink**

SHENGHAI

# 01 | LED Aluminum Heatsink

Shenghai is a professional aluminum extrusion manufacturer in China with 15 years of experience.

We are committed to producing durable and reliable custom LED heat sinks for LED lamps.

There are many different production processes for custom LED heat sinks. Shenghai offers extrusion, die casting, stamping, cold forging and other processes.

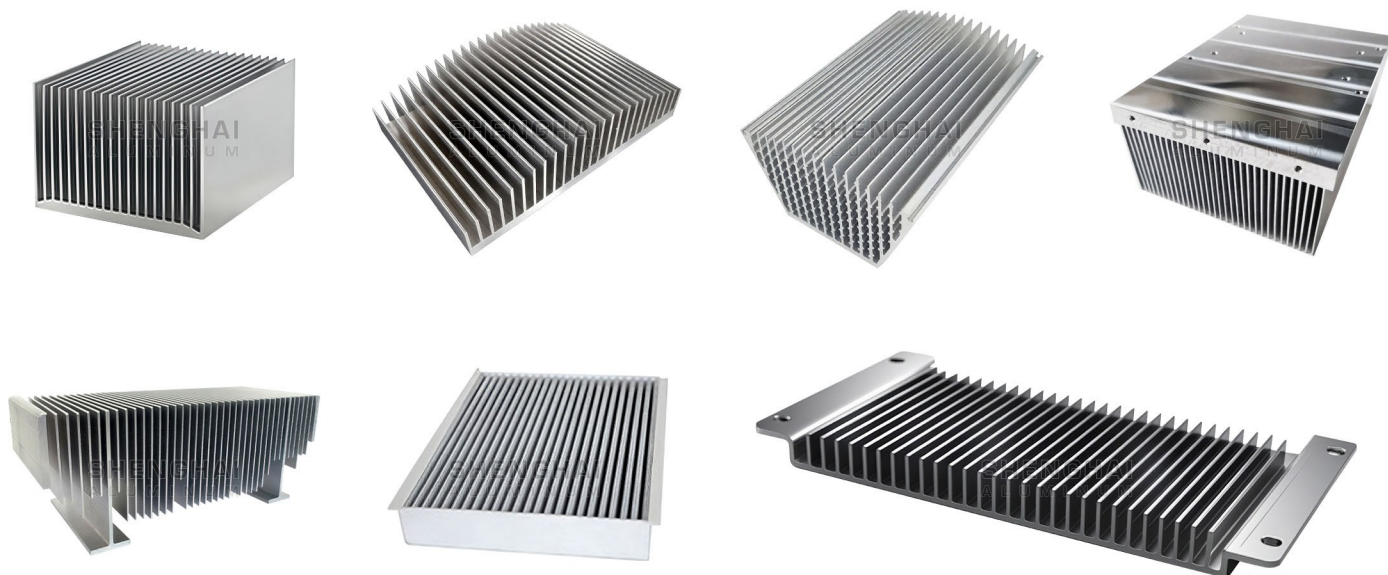
## LED Aluminum Heatsink Product Display



# 02 | Electronic Aluminum Heatsink

Shenghai provides OEM/ODM services to provide the perfect cooling solution for your electronic products. The heat sink is made of high-quality aluminum material and the dimensional tolerance is tested under our strict quality control system to ensure the best heat dissipation performance while minimizing assembly costs.

## Electronic Aluminum Heatsink Product Display



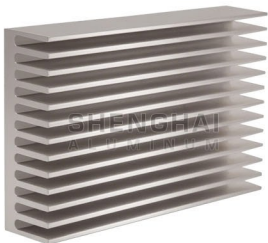
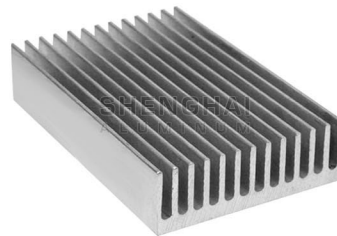


# 03

## Aluminum Heatsink Heavy Duty

Shenghai's heavy-duty aluminum radiator is designed specifically for high-performance heat dissipation needs. It is made of high-strength aluminum alloy and has excellent thermal conductivity, corrosion resistance and structural strength through high-precision CNC processing and surface anodizing treatment.

### Aluminum Heatsink Heavy Duty Product Display

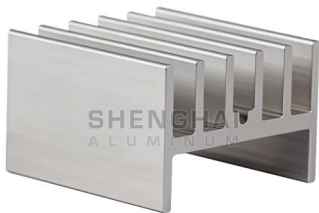


# 04 | Custom Aluminum Heatsink

Shenghai custom aluminum heat sinks can be customized according to the customer's layout or design to meet their preferences. Since the custom heat sink will definitely fully meet your needs and required standards, it will undoubtedly be your ideal choice.

- Support high-precision CNC processing
- Custom heat sinks with high heat dissipation performance

## Custom Aluminum Heatsink Product Display





# 05 | Anodized Heatsink

Shenghai offers electrochemical treatment for all types of heat sinks, and the material involved is aluminum. Many heat sinks produced by Shenghai can be anodized.

Shenghai anodized heat sinks eliminate mold scratches on heat sinks. Through Shenghai's high-tech manufacturing process, our anodized heat sinks are stylish, strong and well protected.

## Anodized Heatsink Product Display

